

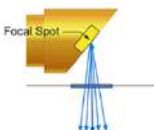


EzRay Air Portable


Portable innovation



World's Lightest



0.4 focal spot



Smart Positioning



Safe



Smart Dial type



Ergonomic design



Accessories

Have you ever complained about your heavy X-ray?

If the portable X-ray were to be heavier than **2 kg**, then there would be...



Wrist pain

The weakest part of the body is the carpe (wrist joint). Taking numerous shots with a heavyweight portable X-ray will weaken and hurt the wrist joint.



Motion artifact

Motion artifact is usually caused by a weak grip and anxiety about using a heavyweight X-ray. Images can come out distorted and inaccurate due to motion artifact and may result in a wrong diagnosis.



Accidental damage

It is tiring to control a heavy device during the whole day and there is always a risk of dropping the X-ray

World's lightest portable X-ray

Since the portable X-ray is only **1.4 kg**, there will be...



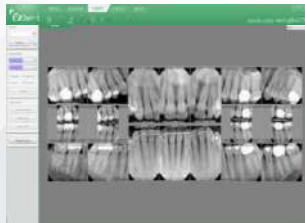
Less stress

Taking X-ray images with a lightweight device will protect the operator's wrist joint, arms, spine, and even the neck when using a neck strap. This device is lighter than the average weight of woman's handbag, so it can definitely be handled with ease and comfort.



Accurate images

When there are stable conditions, positioning the device becomes very easy, and the images will not suffer from moving or shaking from the operator's hands. Dentists will acquire more accurate images without motion artifact.

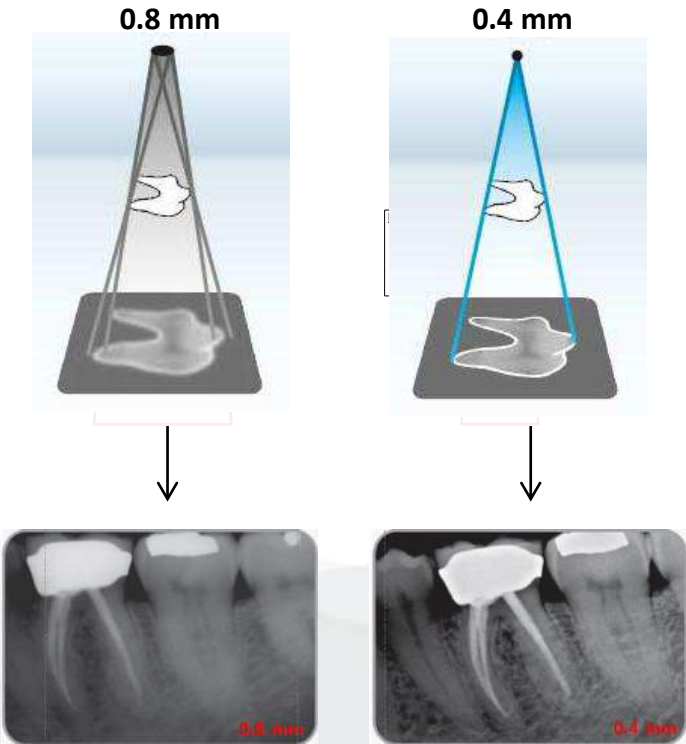


Saved time

Handling a lightweight device is very convenient. There will be less time taken when processing a full mouth series, less stress for the staff, and a faster workflow.



0.4 Focal Spot ensures high quality images



The smaller the better.

If you are not satisfied with your X-ray images, you better check the size of the focal spot.

The smaller the focal spot of the X-ray tube head, the greater the image quality you will get. Because the margins of the edges can be reduced, you achieve clearer images that contain more details.

EzRay Air provides a focal spot of 0.4mm; this is becoming the new standard for excellent X-ray image quality.

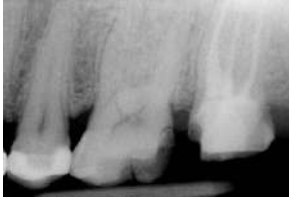
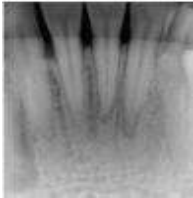
You may also consider the tube voltage of your X-ray. EzRay Air provides 65kVp, a very high voltage intensity which produces a sharper and more contrasted image.

Stressed out about retakes?

Retakes are inevitable.

When the principles of radiographic techniques are not applied, technical errors will occur.

Incorrect X-ray beam angulation in the vertical plane distorts the length of the structures and results in errors. Length accuracy is crucial and retakes often occur when those errors are present.



Foreshortening

The projected image is shorter than the actual object. If the **PID** is over angulated or too steep, relative to the long axis of the teeth, a foreshortened image will be produced.

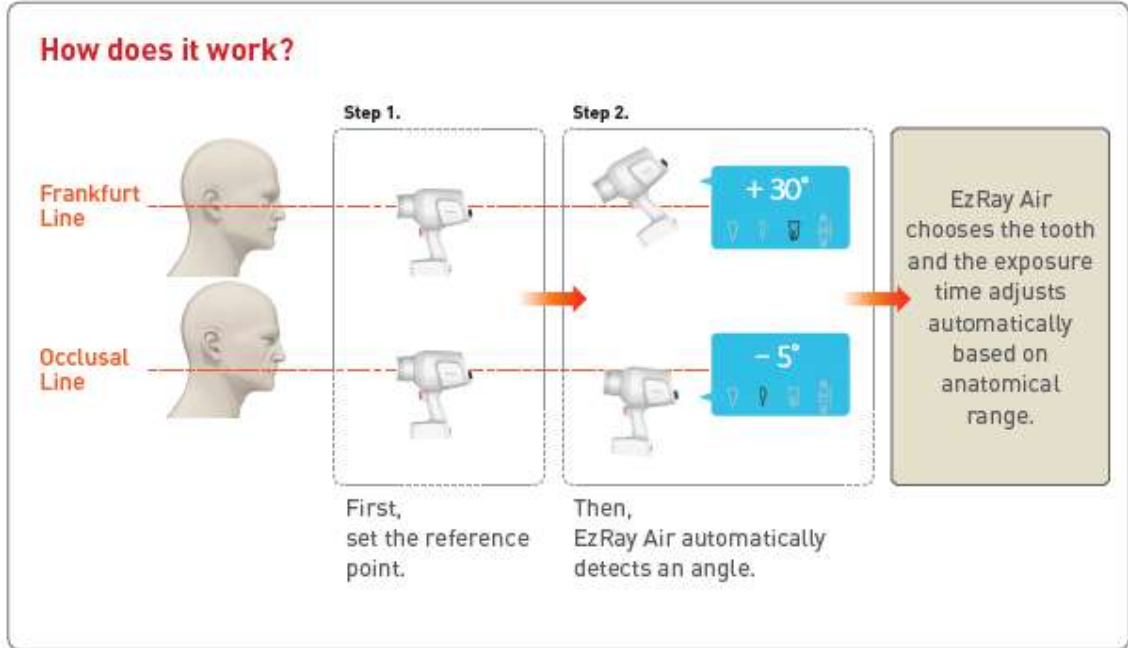
Elongation

The projected image is longer than the actual object. If the PID is under angulated or too shallow, relative to the long axis of the teeth, an elongated image will be produced.

PID: Position indicating device

Smart positioning gets you accurate results

World's First Smart Positioning



All you need to do is set the reference settings. EzRay Air will do the rest.

No more complicated settings anymore. Operators just need to follow the guidelines for the occlusal plane or Frankfurt line, and start the exposure. This process is extremely simple, even for new staff members.

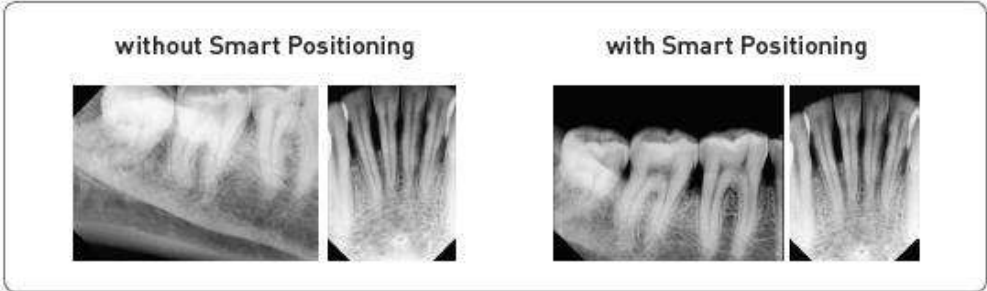
Smart positioning gets you accurate results

World's First Smart Positioning



Struggling with positioning for patients who are bedbound or wheelchair-bound?

EzRay Air is the answer.



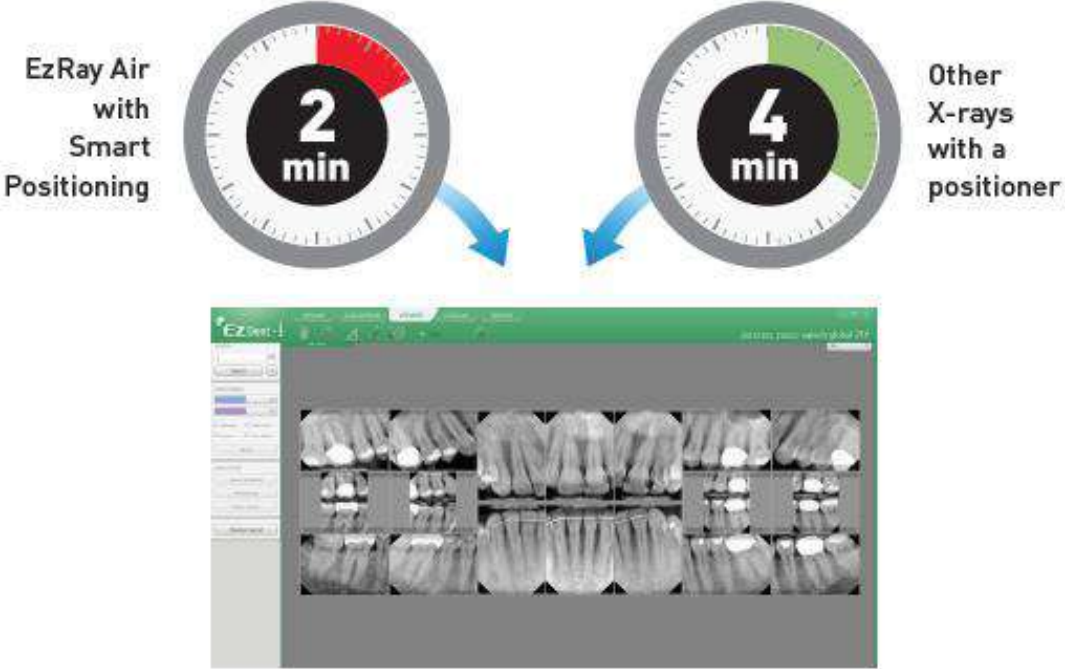
Accurate positioning is the most important factor when acquiring superb image quality. When a patient is on bed or wheelchair, a film or a digital sensor positioner are additional accessories that are used to achieve correct positioning. With the World's first smart positioning from **EzRay Air**, just find an angle and produce premium quality images every single time.

Smart positioning gets you accurate results

World's First Smart Positioning

The fastest and easiest way to get a full mouth series.

Patients usually feel uncomfortable when taking a full mouth X-ray, because the process is too long for them. However, the EzRay Air adapted with the Smart Positioning function enables a fast and accurate full mouth X-ray.



Meticulously designed for your safety



ALARA Principles in Everyday Dental Practices

Because of the numerous benefits of the portable x-ray, usage has increased within dental practices. Although its convenience and utility are highly coveted, there is a chance that the operator has the possibility of direct exposure to leakage radiation from the tube head and scattered radiation from the patient.

Double Shielding Design

Internal Shielding

The internal radiation shielding is perfectly designed to protect the operator from leakage radiation.

External Backscatter Shielding

Scatter radiation results from the beam interacting with the surface of the patient, causing radiation to bounce as scatter in different directions. The backscatter shield significantly reduces the operator's radiation dose.



Long cone for reducing radiation

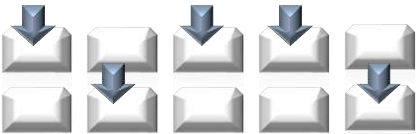



This device was designed to ensure a distance from the FOCAL SPOT TO SKIN of at least 200mm

The long cone can reduce operator's radiation dose to 48~52%.⁷⁾ The cone of the EzRay Air has been designed to be 200mm long, therefore there is no need for an accessory to extend the length of the cone.

One dial for all functions

Smart dial for all settings

Keyboard type	Dial type
<p data-bbox="415 639 749 668">1 2 3 4 5</p>  <p data-bbox="363 882 873 1045">Step 1. Setting Mode display or hide Step 2. Digital or Analog Step 3. Incisor, Canine and Molar Step 4. Adult or Child Step 5. Option to change setting mode</p>	 <p data-bbox="1062 1082 1483 1120">One dial for every setting</p>

With **EzRay Air**, you don't need to remember all the buttons for each setting. The Smart Dial has all settings in one dial. This feature will reduce your preparation time and make work simpler and go faster. Powered by the Smart Positioning function, the tooth mode and scan time settings are optional as well.

Smart & ergonomic style, what you need for your clinic

The design integrates style and convenience.

EzRay Air fits into the clinic's modern interior look, minimizes the look of formal medical equipment as well as displays contemporary accessory design.



A Cylindrical grip is formed with an ergonomic design which provides convenience for the operator who normally uses big and heavy types of X-rays either portable or wall type. ¹⁰⁾ With EzRay Air, you are able to carry and use it in one hand.

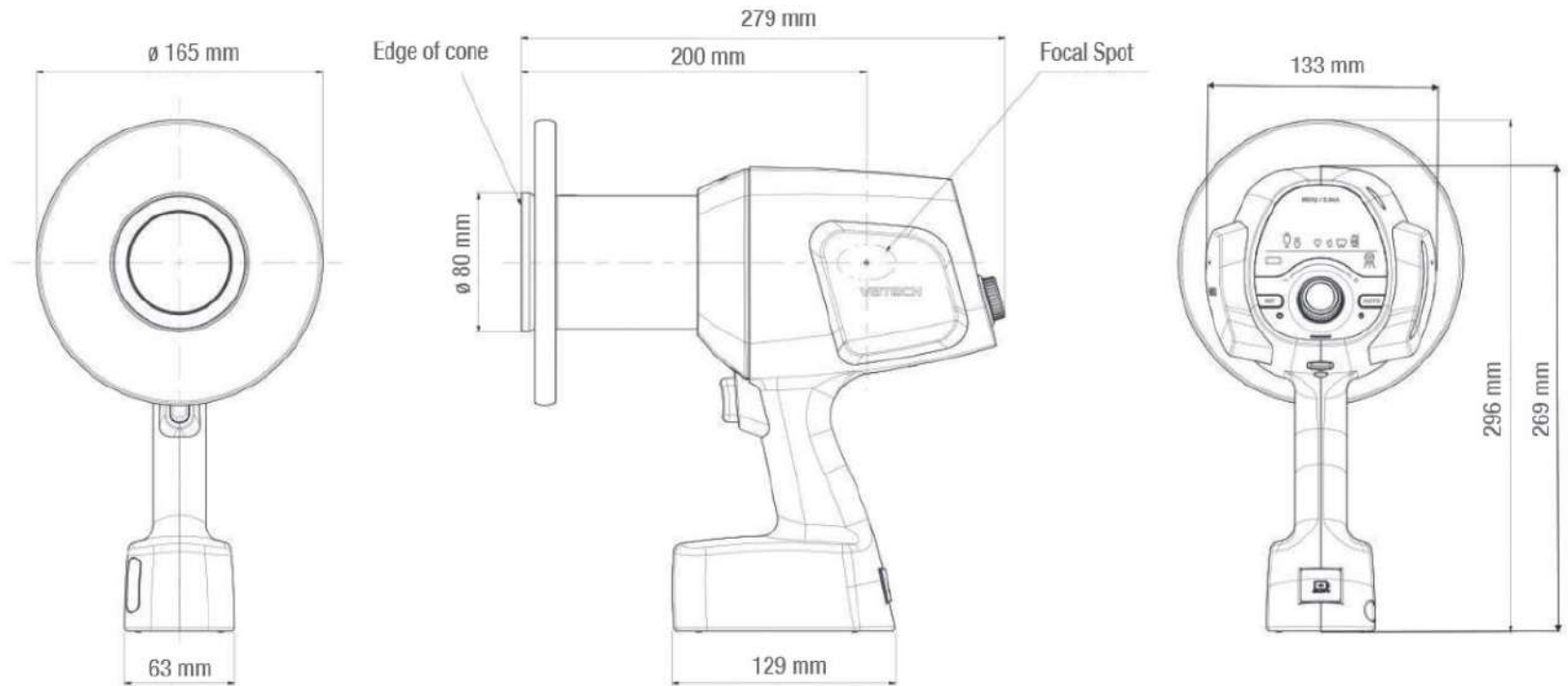
When designing the X-ray, we considered the grip's thickness in order to provide optimum grip feeling and grip angle for the female who can use it conveniently by grabbing the handle with one hand. A neck strap can also be used to prevent neck pain.



Technical Specification

Focal Spot	0.4 mm (IEC 60336)
Tube Voltage (kV)	65 kV
Tube Current (mA)	2.5 mA
Exposure Time Range	0.05 ~ 0.5 sec
Total Filtration	Min. 1.5 mm Al
Source to Skin Distance	200 mm
X-ray Field	Default: 60 mm Round, 30 x 40 mm Rectangular / Optional: 20 x 30 mm Rectangular
Maximum duty cycle	1 : 30
Power Input	22.2 V
Weight	4.19 lbs.

Dimension



Angles on Smart Positioning Mode

Teeth Area	Maxillary	Mandibular
Incisor	-50° ~ -40°	22° ~ 28°
Premolar	-50° ~ -40°	17° ~ 23°
Molar	-35° ~ -25°	2° ~ 8°
Bitewing	-12° ~ -3°	

Sample Image by EzRay Air



*Exposed for 0.2 sec

*EzSensor Classic as a receptor